

OPERATOR'S MANUAL

PUSH BEAM TROLLEY 0.5 TON THROUGH 10 TON



GEARED BEAM TROLLEY 1 TON THROUGH 30 TON



BEAM TROLLEY WITH CLAMP 1 TON THROUGH 5 TON



**These products meet or exceed
the following standards:**

CE | AS1418.2 | ANSI B30.10
(For use with manual or powered hoists)



P.O. Box 845, Winona, MN 55987
Phone (800) 749-1064
(507) 474-6250
Tech Support (507) 457-3346
Fax (507) 452-5217
sales@ozliftingproducts.com
www.ozliftingproducts.com

Table of Contents

| | |
|-------------|---|
| Pg.2 | Product Features |
| Pg.3 | Warranty |
| Pg.4 | Important Information and Precautions/Warnings |
| Pg.5 | Technical Information |
| Pg.6 | Technical Information |
| Pg.7 | Pre-Installation/Operation/Maintenance |



Check out our How to Videos at
www.ozliftingproducts.com

Product Features



PUSH BEAM TROLLEY



GEARED BEAM TROLLEY



BEAM TROLLEY WITH CLAMP

- Lightweight robust construction
- Fit most I,S,and W beams
- Safety yellow powder coating for durable surface protection
- Anti derailment – buffer end plates
- Precision ball bearing trolley wheels.

Warranty

All OZ Lifting Products LLC. are guaranteed to be free of defects in materials and workmanship for five years from date of shipment.

This does not apply to any product showing signs of misuse, overloading, alteration, improper maintenance, or negligence. Normal wear and tear of moving parts is excluded from this warranty.

If any one of our products fails during the first five years of operating due to defective materials or workmanship it will be repaired or replaced at the discretion of OZ Lifting Products. The product will then be returned to the customer free of charge. If no defect is found the customer will be responsible for return shipping costs.

Upon repair the product will be covered by the warranty for the remainder of the original warranty. OZ lifting will not be held liable for injuries to persons or property, death, incidental, consequential, or contingent damages whether negligent or deliberate arising from the use of the product. It is the sole responsibility of the owner to install and operate the product properly and safely.

This is OZ Lifting Product's only written warranty. This warranty is in lieu of all other warranties implied by law such as merchantability and fitness.

Warranty Policy

Any product for which there is a warranty claim must be returned prepaid to an authorized OZ Lifting warranty depot along with proof of purchase.

For more information please contact:



P.O. Box 845, Winona, MN 55987

Phone (800) 749-1064

(507) 474-6250

Tech Support (507) 457-3346

Fax (507) 452-5217

sales@ozliftingproducts.com

www.ozliftingproducts.com

Important Information and Precautions

This manual contains general instructions dealing with the normal installation, operation and maintenance of the products described herein.

This product should not be installed, operated, or maintained by any person who has not read all the contents of these instructions. Failure to read and comply with these instructions, warnings, or limitations noted might result in bodily injury, death, or property damage. Contact the distributor for further explanation if information is not fully understood.

It is the responsibility of the owner/user to install, test, maintain, and operate these products in accordance with OSHA regulations, other federal, state, and local regulations, and ANSI standards.

Only trained and qualified personnel shall operate and maintain this equipment.

Maintain Records

Schedule and maintain records of regular inspection and maintenance of the product in compliance with ANSI standards.

Record your trolley's Serial Number on the front cover of this manual to allow for easier referencing.

Precautions

Do not use OZ Lifting products in conjunction with other equipment unless the system designer, manufacturer, installer, or user has put the necessary safety devices in place.

Modifications to upgrade or alter these products should only be authorized by the original manufacturer.

These Trolleys should be used for holding loads only within their load ratings.

Standards: CE, AS1418.2, ANSI B30.10 (For use with manual or powered hoists)

Warnings

Failure to read and comply with the following warnings may result in a hazardous situation that could lead to death, serious injury, or property damage.

Be sure to properly install, operate, and maintain the trolley so that it does not come off the beam.

Do Not lift more than the rated load.

Do Not lift people or lift loads over people.

Do Not operate with side or off center loading of load.

Do Not operate a damaged or malfunctioning product.

Do Not remove, deface, or obscure warning labels.

Do Not leave a suspended load unattended, unless specific precautions are instituted.

Do Not operate until personnel are warned of approaching loads and are cleared from the area.

Do Not operate if locking nuts are not tight and locked in position.

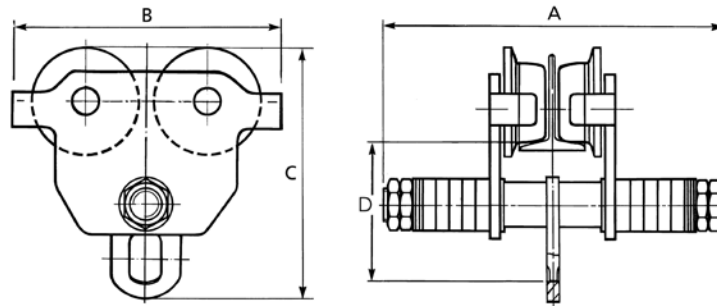
Do Not operate if space washers are not correctly spaced (refer to inspection chart).

Do Not operate if end stops are defective and don't restrain the trolley.



Technical Information

PUSH BEAM TROLLEY (0.5, 1, 2, 3, 5 and 10 tons)



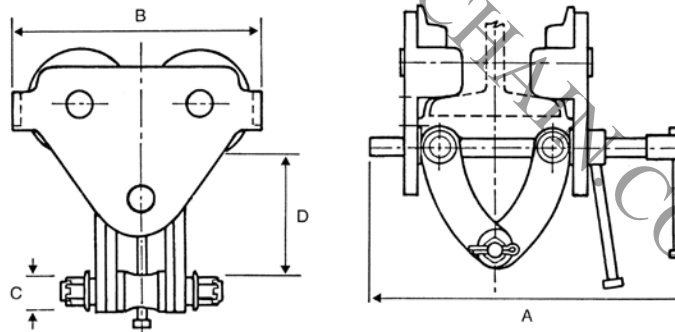
Bail and Wheel
Dimensions available at
www.ozliftingproducts.com

Specification

| Product Code | OZ05PBT | OZ1PBT | OZ2PBT | OZ3PBT | OZ5PBT | OZ10PBT |
|------------------------------|----------------|----------------|----------------|----------------|----------------|----------------|
| Safe Working Load (lbs) | 1,000 (lbs) | 2,000 (lbs) | 4,000 (lbs) | 6,000 (lbs) | 10,000 (lbs) | 20,000 (lbs) |
| Adjustable Flange Width (in) | 2.52-5.90 (in) | 2.52-8.00 (in) | 3.46-8.00 (in) | 4.00-8.00 (in) | 4.49-8.00 (in) | 4.92-8.00 (in) |
| Dimensional Information (in) | A | 9.75 (in) | 12.69 (in) | 13.19 (in) | 14.31 (in) | 15.07 (in) |
| | B | 8.50 (in) | 10.24 (in) | 11.81 (in) | 13.58 (in) | 15.55 (in) |
| | C | 7.67 (in) | 9.41 (in) | 11.26 (in) | 13.23 (in) | 15.47 (in) |
| | D | 4.33 (in) | 5.31 (in) | 6.34 (in) | 7.28 (in) | 8.66 (in) |
| Minimum Radius Curve (ft) | 2.95 (ft) | 3.28 (ft) | 3.60 (ft) | 4.26 (ft) | 4.59 (ft) | 5.57 (ft) |
| Net Weight (lbs) | 20 (lbs) | 32 (lbs) | 50 (lbs) | 82 (lbs) | 123 (lbs) | 215 (lbs) |

Technical Information

BEAM TROLLEY WITH CLAMP (.5, 1, 2, 3, 5 and 10 tons)



Bail and Wheel
Dimensions available at
www.ozliftingproducts.com

Specification

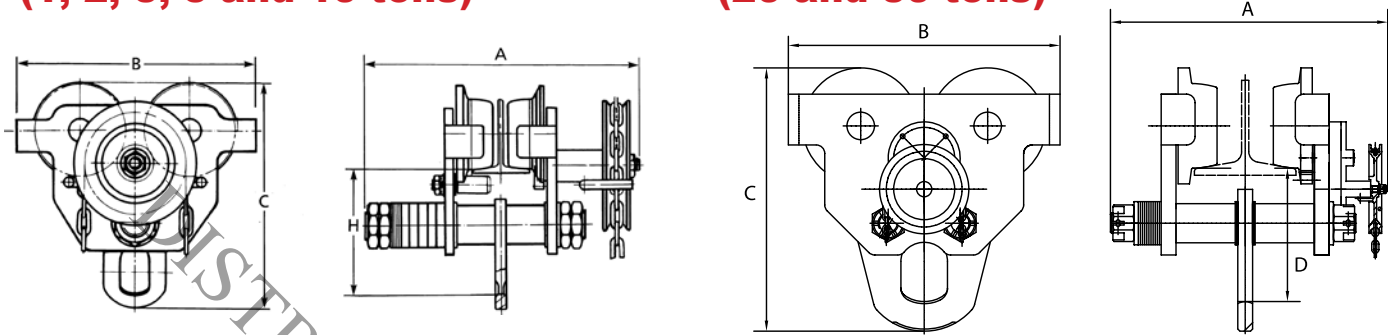
| Product Code | OZ05BTC | OZ1BTC | OZ2BTC | OZ3BTC | OZ5BTC | OZ10BTC |
|------------------------------|-------------|----------------|----------------|----------------|-----------------|-----------------|
| Safe Working Load (lbs) | 1,000 (lbs) | 2,000 (lbs) | 4,000 (lbs) | 6,000 (lbs) | 10,000 (lbs) | 20,000 (lbs) |
| Adjustable Flange Width (in) | 3.63-7.12 | 2.48-4.88 (in) | 2.99-8.27 (in) | 2.99-8.27 (in) | 3.94-12.01 (in) | 6.89-12.01 (in) |
| Dimensional Information (in) | A | 11.75 (in) | 13.98 (in) | 14.71 (in) | 14.17 (in) | 18.50 (in) |
| | B | 8.00 (in) | 9.53 (in) | 11.06 (in) | 12.91 (in) | 14.84 (in) |
| | C | .75 (in) | .88 (in) | .88 (in) | .97 (in) | 1.11 (in) |
| | D (min-max) | 5.87-7.12 (in) | 5.75-7.22 (in) | 6.06-7.22 (in) | 6.35-7.97 (in) | 8.81-10.61 (in) |
| Minimum Curve Radius (ft) | 3.28 (ft) | 3.28 (ft) | 3.61 (ft) | 4.26 (ft) | 4.60 (ft) | 5.57 (ft) |
| Net Weight (lbs) | 13 (lbs) | 25 (lbs) | 38 (lbs) | 57 (lbs) | 102 (lbs) | 205 (lbs) |

Technical Information

GEARED BEAM TROLLEY

(1, 2, 3, 5 and 10 tons)

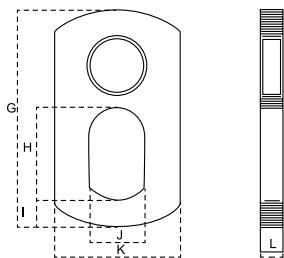
(20 and 30 tons)



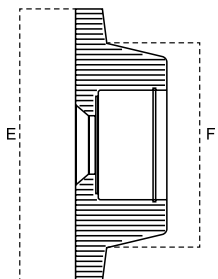
Specification

| Product Code | OZ1GBT | OZ2GBT | OZ3GBT | OZ5GBT | OZ10GBT | OZ20GBT | OZ30GBT |
|------------------------------|----------------|----------------|----------------|----------------|----------------|-----------------|--------------|
| Safe Working Load (lbs) | 2,000 (lbs) | 4,000 (lbs) | 6,000 (lbs) | 10,000 (lbs) | 20,000 (lbs) | 40,000 (lbs) | 60,000 (lbs) |
| Adjustable Flange Width (in) | 2.52-8.00 (in) | 3.46-8.00 (in) | 4.01-8.00 (in) | 4.49-8.00 (in) | 4.92-8.00 (in) | 8.27-13.00 (in) | *** |
| Dimensional Information (in) | A | 15.56 (in) | 15.63 (in) | 17.69 (in) | 18.25 (in) | 18.75 (in) | 25.48 (in) |
| | B | 10.24 (in) | 11.81 (in) | 13.58 (in) | 15.55 (in) | 17.91 (in) | 25.28 (in) |
| | C | 9.41 (in) | 11.26 (in) | 13.23 (in) | 15.47 (in) | 19.68 (in) | 24.49 (in) |
| | D | 5.31 (in) | 6.34 (in) | 7.28 (in) | 8.66 (in) | 11.02 (in) | 12.29 (in) |
| Minimum Radius Curve (ft) | 3.28 (ft) | 3.60 (ft) | 4.26 (ft) | 4.59 (ft) | 5.57 (ft) | 14.76 (ft) | 14.76 (ft) |
| Net Weight (lbs) | 44 (lbs) | 62 (lbs) | 95 (lbs) | 136 (lbs) | 234.00 (lbs) | 565 (lbs) | 573 (lbs) |
| * Std. length of hand chain | 9 (ft) | 9 (ft) | 9 (ft) | 9 (ft) | 9 (ft) | 9 (ft) | 9 (ft) |

Trolleys' Bail Dimensions



| BAIL DIMENSIONS | OZ1GBT | OZ2GBT | OZ3GBT | OZ5GBT | OZ10GBT | OZ20GBT | OZ30GBT |
|-----------------|-----------|-----------|-----------|-----------|------------|------------|------------|
| G | 4.65 (in) | 5.71 (in) | 7.09 (in) | 8.67 (in) | 11.23 (in) | 12.99 (in) | 13.19 (in) |
| H | 1.97 (in) | 2.37 (in) | 2.96 (in) | 3.75 (in) | 4.73 (in) | 5.91 (in) | 5.91 (in) |
| I | 0.60 (in) | 0.79 (in) | 1.03 (in) | 1.38 (in) | 1.78 (in) | 2.75 (in) | 2.75 (in) |
| J | 1.21 (in) | 1.42 (in) | 1.78 (in) | 2.37 (in) | 3.23 (in) | 4.33 (in) | 4.33 (in) |
| K | 2.68 (in) | 3.35 (in) | 3.94 (in) | 4.73 (in) | 5.91 (in) | 9.45 (in) | 9.45 (in) |
| L | 0.48 (in) | 0.56 (in) | 0.63 (in) | 0.79 (in) | 0.99 (in) | 1.38 (in) | 1.18 (in) |



Trolleys' Wheel Dimensions

| WHEEL DIMENSIONS | OZ1GBT | OZ2GBT | OZ3GBT | OZ5GBT | OZ10GBT | OZ20GBT | OZ30GBT |
|------------------|-----------|-----------|-----------|-----------|-----------|------------|------------|
| E | 4.02 (in) | 5.00 (in) | 5.79 (in) | 6.30 (in) | 7.45 (in) | 10.76 (in) | 10.76 (in) |
| F | 2.96 (in) | 3.55 (in) | 4.34 (in) | 4.81 (in) | 5.95 (in) | 7.88 (in) | 7.88 (in) |

Pre-Installation

Check for damage during shipment. Do not install or use a damaged product.
Contact your OZ Lifting Product dealer if there are any problems.

Before initial operation:

Read and comply with all instructions and warnings furnished with or attached to the product if applicable.

Operation

Warnings & Precautions

Trolley operators should read and fully comprehend this entire manual and all warnings on the hoist before beginning hoist operation. If this manual is not read and followed completely injuries may occur.

Operator Requirements:

Must be trained in proper trolley operation and dealing with potential malfunctions.

Should not operate trolley while under influence of alcohol, medications, or drugs.

Should not operate the trolley while tired or distracted.

Should not operate trolley if they have a history of seizures or other medical issues that may interfere with operation.

Should have proper coordination and vision.

Prior to Operation be sure:

Trolley is in proper working condition and maintenance records are up to date.

Operation

Be aware of trolley load capacity and don't overload.

Attach load to suspension plate directly under the trolley

Maintenance

Inspection

Monthly: Inspect the suspension plate, track wheel, and locking nuts.

Locking Nuts

Be sure that locking nuts are secure.

Operators should visually inspect trolley on a regular basis. Observe for wear, damage, cuts, cracks, or corrosion. If any problems are observed the trolley should be placed out of service until it can be repaired. Use only OZ Lifting products for replacement parts.

Once a year the trolley should be taken to an authorized repair center for professional inspection.

DISTRIBUTED BY TULSA CHAIN.COM



P.O. Box 845, Winona, MN 55987
Phone (800) 749-1064
(507) 474-6250
Tech Support (507) 457-3346
Fax (507) 452-5217
sales@ozliftingproducts.com
www.ozliftingproducts.com