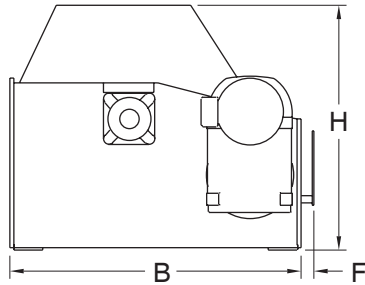
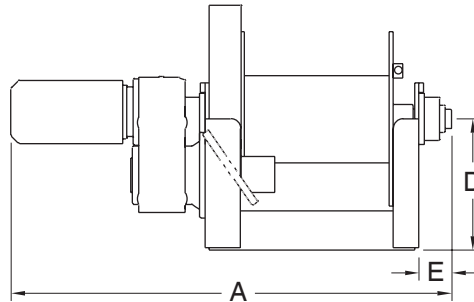


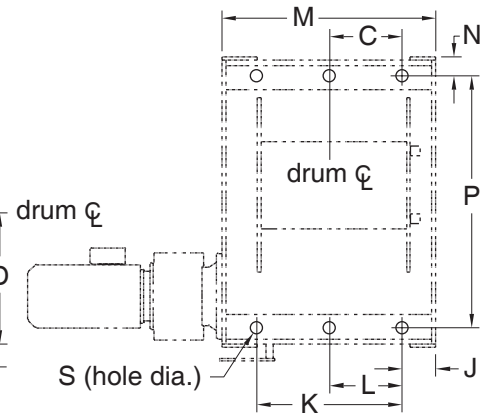
Side View



Front View

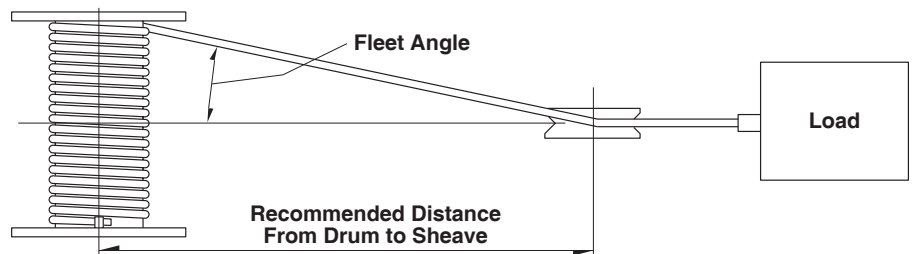


Top View


Series 4HS – Winch Dimensions (in)

model extension	A	B	C	D	F	E	H	J	K	L	M	N	P	S (hole dia.)
4HS40M-33000-20	91.00	60.00	14.00	27.00	2.75	6.75	51.00	7.00	30.00	–	44.00	4.00	52.00	1.75
4HS40M-33000-30	93.75	60.00	14.00	27.00	2.75	6.75	51.00	7.00	30.00	–	44.00	4.00	52.00	1.75
4HS40M-33000-40	95.75	60.00	14.00	27.00	2.75	6.75	51.00	7.00	30.00	–	44.00	4.00	52.00	1.75
4HS40M-40000-20	91.00	60.00	14.00	27.00	2.75	6.75	51.00	7.00	30.00	–	44.00	4.00	52.00	1.75
4HS40M-40000-25	93.75	60.00	14.00	27.00	2.75	6.75	51.00	7.00	30.00	–	44.00	4.00	52.00	1.75
4HS40M-40000-35	95.75	60.00	14.00	27.00	2.75	6.75	51.00	7.00	30.00	–	44.00	4.00	52.00	1.75
4HS56M-48000-20	108.00	72.00	18.00	32.00	2.75	8.75	62.00	7.00	36.00	18.00	54.00	4.50	63.00	1.75
4HS56M-48000-30	110.00	72.00	18.00	32.00	2.75	8.75	62.00	7.00	36.00	18.00	54.00	4.50	63.00	1.75
4HS56M-52000-35	113.00	72.00	18.00	32.00	2.75	8.75	62.00	7.00	36.00	18.00	54.00	4.50	63.00	1.75
4HS56M-56000-20	108.00	72.00	18.00	32.00	2.75	8.75	62.00	7.00	36.00	18.00	54.00	4.50	63.00	1.75
4HS56M-56000-25	110.00	72.00	18.00	32.00	2.75	8.75	62.00	7.00	36.00	18.00	54.00	4.50	63.00	1.75
4HS56M-56000-30	113.00	72.00	18.00	32.00	2.75	8.75	62.00	7.00	36.00	18.00	54.00	4.50	63.00	1.75

Dimensions are for reference only and subject to change without notice. Please contact factory for exact dimensions.


Important:

It is the owner's or operator's responsibility to determine the suitability of the equipment to its intended use. Study all applicable codes, manuals, and regulations. Be sure to read the Owner's Manual supplied with the equipment before operating it.

Series 4HS – Drum Dimensions

series	drum diameter	flange diameter	drum width	fleet angle distance ¹
4HS40M	18.00 in	36.00 in	30.00 in	48 ft
4HS56M	24.00 in	43.00 in	36.00 in	58 ft

Dimensions are for reference only and subject to change without notice. Please contact factory for exact dimensions.

¹ Recommended minimum distance between drum and lead sheave for smooth drum.